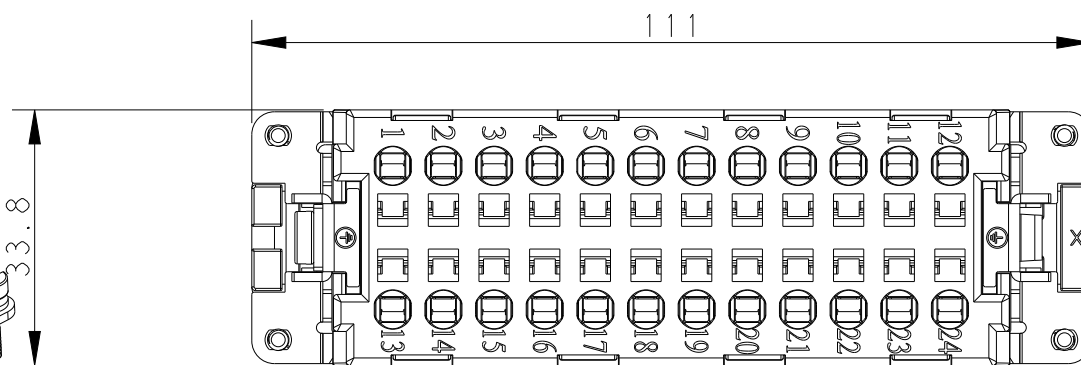
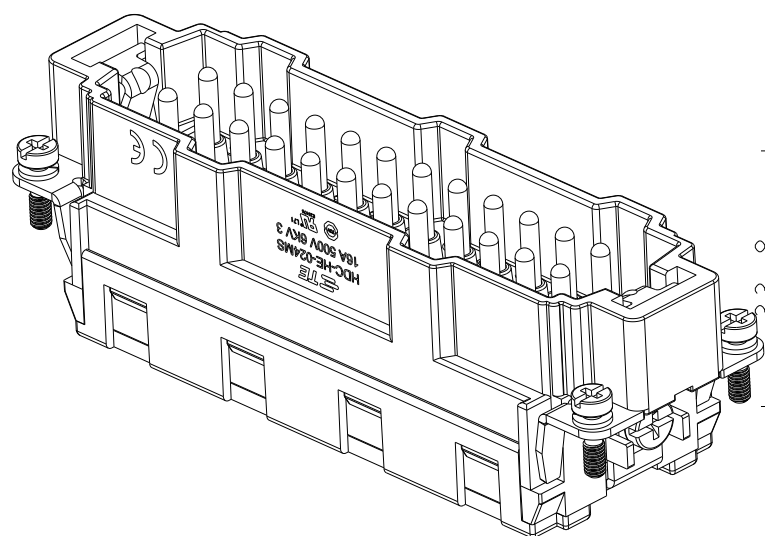
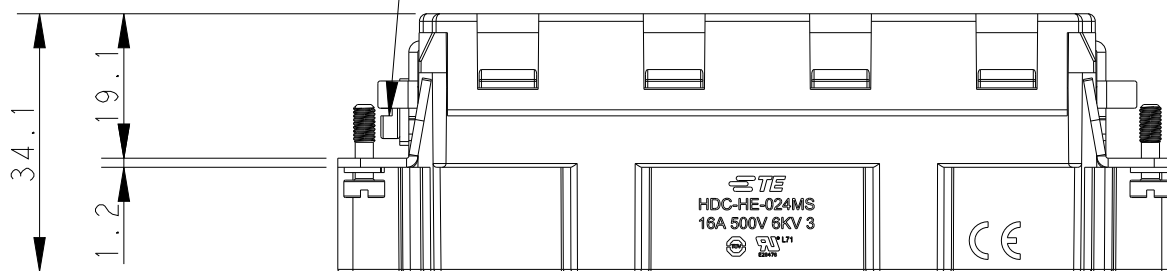
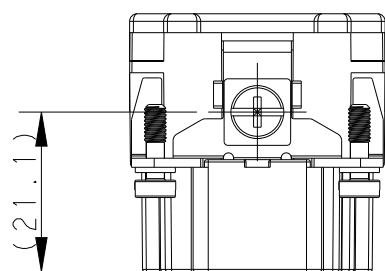


REVISIONS

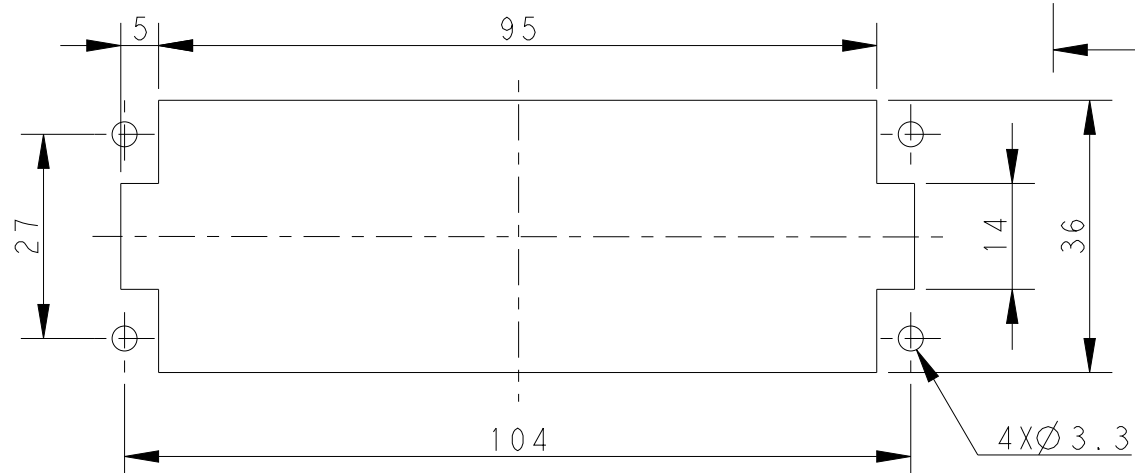
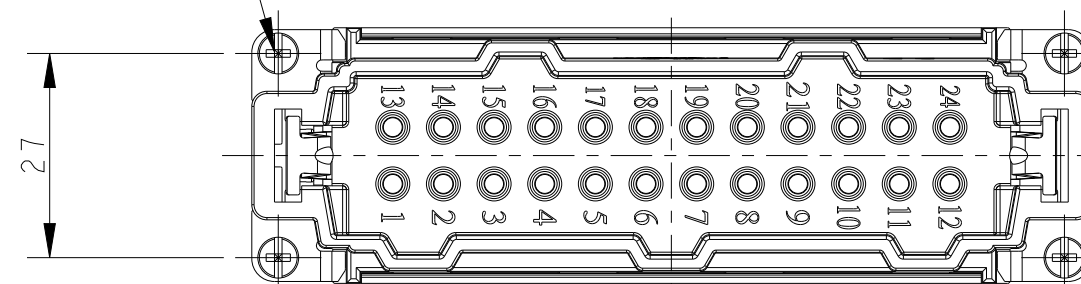
P	LTR	DESCRIPTION	DATE	DWN	APVD
A		INITIAL	05Jan2015	GY	CW
A1		ECR-15-004309	24Mar2015	GY	CW
B		ECR-15-013759	26Sep2015	DW	CW
C		ECR-21-106515	21JUL2021	SQ	CW



M4 screw, recommended tightening torque 1.2Nm



4 X M3 screw, recommended tightening torque 0.5Nm



Panel cut out for inserts for using without hoods/housings

NOTES:

- TECHNICAL CHARACTERISTICS:
 - INSULATION MATERIAL: PC
 - RATED VOLTAGE: 500V
 - RATED CURRENT: 16A
 - INSULATION RESISTANCE: $\geq 400M\Omega$
 - RATED IMPULSE VOLTAGE: 6KV
 - POLLUTION DEGREE: 3
 - FLAMMABILITY: UL94V-0
 - MATING CYCLES: 500 CYCLES
 - OPERATION TEMPERATURE: $-40^{\circ}C \sim +125^{\circ}C$
 - WIRE RANGE: $0.5mm^2 \sim 2.5mm^2$ (AWG20-AWG14)
 - CONTACT TYPE: SPRING CLAMP

注释:

- 技术参数:
 - 绝缘材料: PC
 - 额定电压: 500V
 - 额定电流: 16A
 - 绝缘电阻: $\geq 400M\Omega$
 - 脉冲电压: 6KV
 - 污染等级: 3
 - 阻燃等级: UL94V-0
 - 插拔次数: 500 次
 - 工作温度: $-40^{\circ}C \sim +125^{\circ}C$
 - 接线范围: $0.5mm^2 \sim 2.5mm^2$ (AWG20-AWG14)
 - 接线类型: 弹片压接

HE-024-MS	T2040243101-000
DESCRIPTION	PART NUMBER



THIS DRAWING IS A CONTROLLED DOCUMENT.		DWN	18Aug2014	NAME	HE-024-MS		
DIMENSIONS:		CHK	18Aug2014				
mm		APVD	18Aug2014				
TOLERANCES UNLESS OTHERWISE SPECIFIED:		PRODUCT SPEC	108-137044				
0 PLC ±-		APPLICATION SPEC	114-137044	SIZE	CAGE CODE	DRAWING NO	RESTRICTED TO
1 PLC ±-		MATERIAL	-	A3	00779	©-T2040243101000	-
2 PLC ±-		FINISH	-	CUSTOMER DRAWING			SCALE
3 PLC ±-							1:1
4 PLC ±-							SHEET
ANGLES ±-							1 OF 1
							REV
							C

Mouser Electronics

Authorized Distributor

Click to View Pricing, Inventory, Delivery & Lifecycle Information:

[TE Connectivity:](#)

[T2040243101-000](#)